



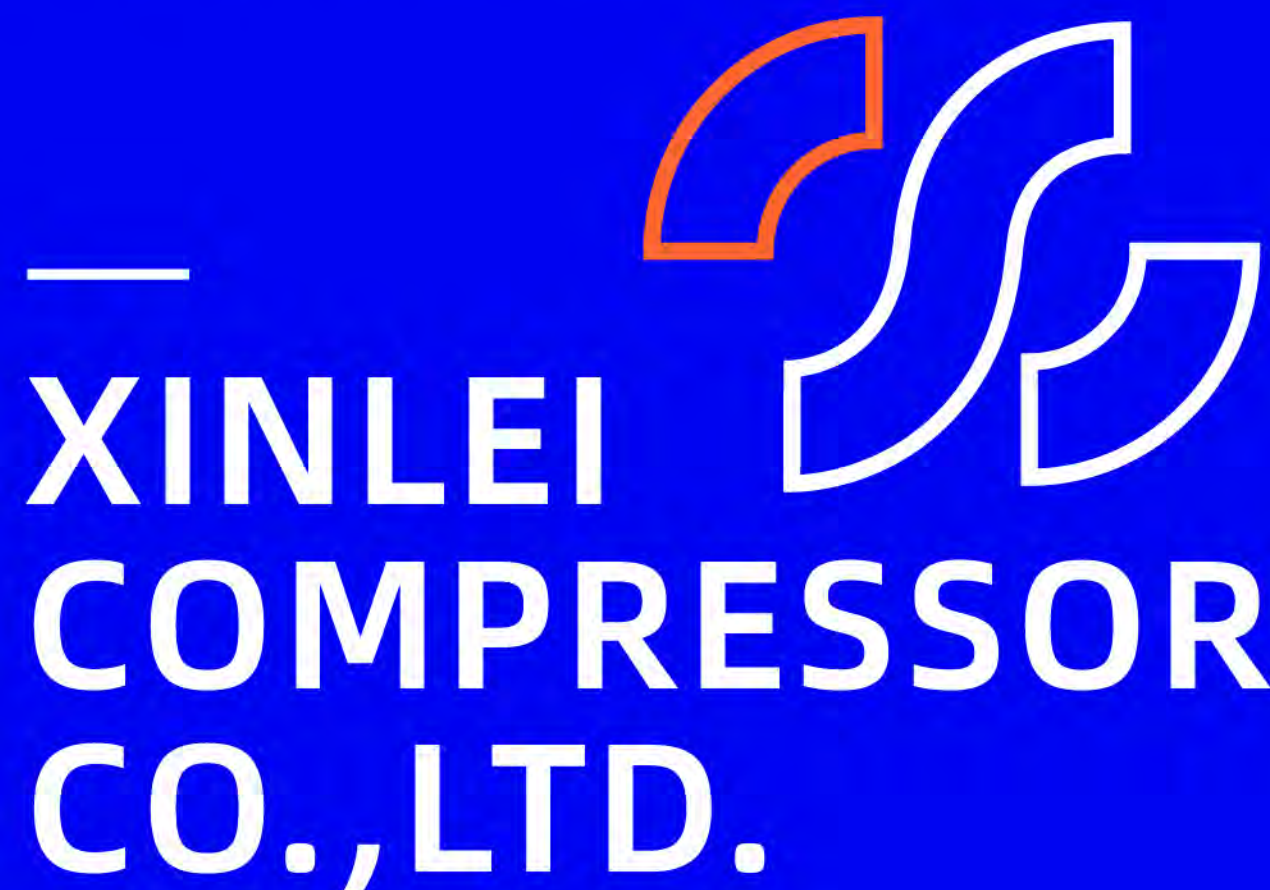
STOCK CODE 301317

SCREW AIR COMPRESSOR OEM SELECTION MANUAL

XINLEI COMPRESSOR CO.,LTD.

Add: Wenling Industrial Zone, Wenling,
Zhejiang, China
Zip Code: 317500
Fax: 0576-89969999
Email: zx@xinlei.com
Web: en.xinlei.com

All the trademarks mentioned in this catalog belong to Xinlei Compressor Co., Ltd and its affiliated companies or related owners. The information description in this catalog is not suitable for all situations due to the difference of time and recipient. The specific information shall be implemented according to the contract. The models and technical parameters provided in this catalog are subject to the actual products and may be changed without notice. Thanks for understanding. Please contact the sales person for more product information and service materials. Xinlei reserves the right of final interpretation of this catalog.



Focus on the customer's challenges and pressures. Provide competitive air energy system solutions and services. Continue to create maximum value for customers.

Founded in Zhejiang, China in 2006. Xinlei is a high-tech enterprise with independent research and development intellectual property rights covering the whole fluid field such as piston, screw and centrifugal. We focus on aerodynamic full-scenario digital and intelligent solution, strive to be a world-class enterprise with world-class standards, create and share digital and intelligent fluid ecology with global customer partners.

Reform aerodynamics. Achieve industrial ideals



**XINLEI
COMPRESSOR
CO.,LTD.**

- 110,000+m² floor area
- 800,000+ units yearly production
- 100+ sales area
- 300+ patents
- 300+ product specifications
- 260+ high quality precision equipment

COMPANY HONOURS

Draft 2 national standards & 4 industrial standards

National high-tech enterprise •

Identified as "China Famous Brand" •

National standard in air compressor industry drafter •



CE, ITS, ASME, TUV and UL Certifications, WIT Environment Certification and High-Tech Enterprise Certification.

CK SERIES

- Advanced V-profile
- All-in-one structure design
- Coaxial integrated directconnection technology
- Air-cooled high-efficiencypermanent magnet motor



ANY OTHER COLORS TO CHOOSE FROM: ■ ■ ■ ■ ■ ■

TECHNICAL SPECIFICATION

FIXED SPEED SERIES

MODEL	POWER		DISPLACEMENT m ³ /min	PRESSURE Bar	DIMENSIONS mm	WEIGHT Kg	OUTER PIPE DIAMETER mm
	kW	HP					
CK-10AM	7.5	10	1.11	7	780x560x915	150	G3/4
			1.06	8			
			0.96	10			
CK-15AM	11	15	1.78	7	1000x640x1015	225	G3/4
			1.70	8			
			1.55	10			
CK-20AM	15	20	2.48	7	1000x700x1015	240	G3/4
			2.37	8			
			2.15	10			
CK-30AM	22	30	3.74	7	1100x750x1140	265	G1 1/4
			3.56	8			
			3.24	10			
CK-50AM	37	50	6.50	7	1150x900x1345	450	G1 1/2
			6.18	8			
			5.62	10			

PERMANENT MAGNET VARIABLE SPEED SERIES

MODEL	POWER		DISPLACEMENT m ³ /min	PRESSURE Bar	DIMENSIONS mm	WEIGHT Kg	OUTER PIPE DIAMETER mm
	kW	HP					
CK-10PM	7.5	10	1.11	7	780x560x915	150	G3/4
			1.06	8			
			0.96	10			
CK-15PM	11	15	1.78	7	1000x640x1015	225	G3/4
			1.70	8			
			1.55	10			
CK-20PM	15	20	2.48	7	1000x700x1015	240	G3/4
			2.37	8			
			2.15	10			
CK-30PM	22	30	3.74	7	1100x750x1140	265	G1 1/4
			3.56	8			
			3.24	10			
CK-50PM	37	50	6.50	7	1150x900x1345	450	G1 1/2
			6.18	8			
			5.62	10			

NOTE : * The exhaust volume is measured under the rated exhaust pressure, according to the national standard GB3853 test (equivalent to ISO1217 appendix C).
 * Recommended use frequency 30%~100%.
 * Models show above are 380V/50HZ standard grid, non-standard can be inquired specifically.
 * Please make enquiry for machines which are used under high/low temperature, dusty working environment.

SUPER ENERGY SAVING EPM SERIES

SUPER ENERGY SAVING

- ☐ Advanced V-profile
- ☐ Energy saving
- ☐ Taper connection
- ☐ Resistance 180°C temperature



ANY OTHER COLORS TO CHOOSE FROM:

TECHNICAL SPECIFICATION

MODEL	POWER		PRESSURE	DISPLACEMENT	DIMENSIONS	WEIGHT	OUTER PIPE
	kW	HP	Bar	m ³ /min	mm	Kg	DIAMETER
							mm
SE-10EPM	7.5	10	7	1.16	950X700X945	195	G3/4
			8	1.11			
			10	1.00			
SE-15EPM	11	15	7	1.87	1000X820X1105	285	G3/4
			8	1.78			
			10	1.62			
SE-20EPM	15	20	7	2.60	1000X820X1105	285	G3/4
			8	2.48			
			10	2.25			
SE-30EPM	22	30	7	3.92	1100X820X1170	370	G1 1/4
			8	3.73			
			10	3.40			
SE-40EPM	30	40	7	5.29	1200X950X1360	550	G1 1/4
			8	5.04			
			10	4.51			
SE-50EPM	37	50	7	6.82	1300X1000X1345	575	G1 1/2
			8	6.48			
			10	5.90			
SE-60EPM	45	60	7	8.21	1300X1000X1345	575	G1 1/2
			8	7.82			
			10	7.10			
SE-75EPM	55	75	7	10.36	1600X1300X1650	1245	G2
			8	9.87			
			10	8.97			
SE-100EPM	75	100	7	13.27	1600X1300X1650	1210	G2
			8	12.64			
			10	11.49			

NOTE : * The exhaust volume is measured under the rated exhaust pressure, according to the national standard GB3853 test (equivalent to ISO1217 appendix C).
 * Recommended use frequency 30%~100%.
 * Models show above are 380V/50HZ standard grid, non-standard can be inquired specifically.
 * Please make enquiry for machines which are used under high/low temperature, dusty working environment.

SUPER ENERGY SAVING EPM SERIES

SINGLE PHASE / THREE PHASE FOR CHOOSE

- ADVANCED V-PROFILE
- ENERGY SAVING
- TAPER CONNECTION
- RESISTANCE 180°C TEMPERATURE

ANY OTHER COLORS TO CHOOSE FROM:



TECHNICAL SPECIFICATION

MODEL	POWER kW	HP	DISPLACEMENT m ³ /min	PRESSURE Bar	DIMENSIONS mm	WEIGHT Kg	OUTER PIPE DIAMETER mm
WITH AIR TANK							
XLPM3AT	2.2	3	0.29	7	1095X540X1377	125	G3/4
			0.26	8			
			0.22	10			
XLPM4AT	3	4	0.42	7	1095X540X1377	130	G3/4
			0.38	8			
			0.31	10			
XLPM5.5AT	4	5.5	0.56	7	1095X540X1377	140	G3/4
			0.53	8			
			0.45	10			
XLPM7.5AT	5.5	7.5	0.68	7	1095X540X1377	148	G3/4
			0.65	8			
			0.59	10			

NOTE : * The exhaust volume is measured under the rated exhaust pressure, according to the national standard GB3853 test (equivalent to ISO1217 appendix C).
 * Recommended use frequency 30%~100%.
 * Models show above are 380V/50HZ standard grid, non-standard can be inquired specifically.
 * Please make enquiry for machines which are used under high/low temperature, dusty working environment.

SUPER ENERGY SAVING EPM SERIES

SINGLE PHASE / THREE PHASE FOR CHOOSE

- ADVANCED V-PROFILE
- ENERGY SAVING
- TAPER CONNECTION
- RESISTANCE 180°C TEMPERATURE

ANY OTHER COLORS TO CHOOSE FROM:



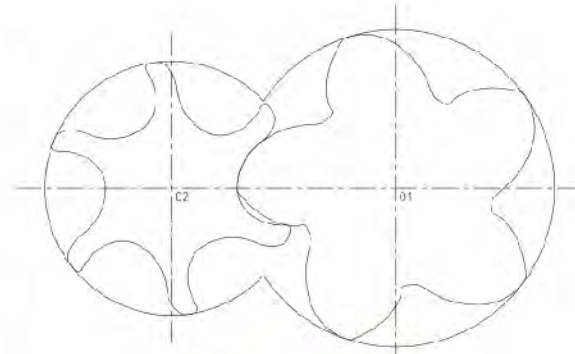
TECHNICAL SPECIFICATION

MODEL	POWER kW	HP	DISPLACEMENT m ³ /min	PRESSURE Bar	DIMENSIONS mm	WEIGHT Kg	OUTER PIPE DIAMETER mm
WITH AIR TANK							
XLPM3ATD	2.2	3	0.29	7	1500X540X1250	180	G3/4
			0.26	8			
			0.22	10			
XLPM4ATD	3	4	0.42	7	1500X540X1250	185	G3/4
			0.38	8			
			0.31	10			
XLPM5.5ATD	4	5.5	0.56	7	1500X540X1250	190	G3/4
			0.53	8			
			0.45	10			
XLPM7.5ATD	5.5	7.5	0.68	7	1500X540X1250	198	G3/4
			0.65	8			
			0.59	10			

NOTE : * The exhaust volume is measured under the rated exhaust pressure, according to the national standard GB3853 test (equivalent to ISO1217 appendix C).
 * Recommended use frequency 30%~100%.
 * Models show above are 380V/50HZ standard grid, non-standard can be inquired specifically.
 * Please make enquiry for machines which are used under high/low temperature, dusty working environment.

XINLEI SUPER ENERGY COMPRESSOR

After design, research and development with this year, Xinlei Company has developed a series of V-profile with CITY UNIVERSITY OF LONDON. Because of its high volume efficiency, reasonable driving contact points, and small area of the exhaust side leakage triangle, the utility model becomes one of the highest energy efficiency profiles. After this year's trial and practice, the single-stage compression can achieve or even exceed the first level of energy efficiency performance among the whole series of products.



THE V-PROFILE

PRODUCT FEATURES

☐ SUPER ENERGY SAVING

The effect of energy saving exceeds that of GB / T19153-2009. In comparison, SE-30EPM can save at least 38,000 yuan per year under full load.

☐ ZERO LOSS TRANSMISSION EFFICIENCY

The super energy permanent magnet single stage screw compressor adopts the design of sharing a shaft between the main machine and the motor, intermediate transition such as center bracket and coupling, belt pulley, gear and other connecting parts are unnecessary, therefore, transmission loss reduced to zero.

☐ HIGH QUALITY INVERTER

Super energy product uses INOVANCE inverter to make the work more stable.



☐ NEVER DEMAGNETIZATION

The super energy saving machine adopts the permanent magnet motor made of the UH grade Nd-Fe-B magnet permanent magnet material, the temperature resistance is up to 180C, and the permanent magnet motor keeps high efficiency and magnetism for a long time, it never demagnetization.



☐ HIGH-EFFICIENCY OIL-COOLED PERMANENT MAGNET MOTOR

IP65 oil-cooled motor, high protection grade, no bearing mechanical loss, no cooling fan loss, low noise and low vibration. The efficiency is 3%-10% higher than the same capacity asynchronous motor. The host and motor share a shaft design, without intermediate transition parts, such as a center bracket, coupling, pulley, gear, etc. Transmission loss is reduced to zero, and transmission efficiency is 100%.



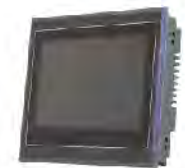
☐ MUTE

The super energy series operate safely with low noise: the noise is 68-74 decibels under the full load operation condition.



☐ INTELLIGENT CONTROL AND OPERATION

The main controller uses color screen, and touch control panel. Equipped with active protection, alarm, maintenance reminders, and runs automatically 24 hours.



* Xinlei company solemnly promises to the market: we only mark the real data, whether it be samples or nameplates. We only do real first-class energy-efficient air compressors.

ALL IN ONE SERIES

AIR COMPRESSOR

REFRIGERATED AIR DRYER

AIR TANK

COMPACT

ENVIRONMENTALLY FRIENDLY

ANY OTHER COLORS TO CHOOSE FROM:



TECHNICAL SPECIFICATION

ALL IN ONE FIXED SPEED SERIES

MODEL	POWER kw HP	PRESSURE Bar	CAPACITY m ³ /min	DIMENSIONS mm	WEIGHT Kg	OUTLET PIPE DIAMETER	NOISE LEVEL dB	TANK VOLUME L	
WITH AIR TANK									
XLAMT7.5A	5.5	7.5	7	0.65	1230X600X1530	300	G3/4	65	
			8	0.60					
			10	0.55					
XLAMT10A	7.5	10	7	1.05	1230X600X1530	300	G3/4	65	
			8	0.99					
			10	0.90					
XLAMT15A	11	15	7	1.68	1550X820X1780	350	G3/4	65	
			8	1.59					
			10	1.45					
XLAMT20A	15	20	7	2.20	1550X820X1780	350	G3/4	65	
			8	2.10					
			10	1.91					
WITH AIR TANK AND DRYER									
XLAMTD7.5A	5.5	7.5	7	0.65	1725X660X1625	380	G3/4	65	200/500
			8	0.60					
			10	0.55					
XLAMTD10A	7.5	10	7	1.05	1725X660X1625	380	G3/4	65	200/500
			8	0.99					
			10	0.90					
XLAMTD15A	11	15	7	1.68	1880X820X1940	505	G3/4	65	500
			8	1.59					
			10	1.45					
XLAMTD20A	15	20	7	2.20	1880X820X1940	505	G3/4	65	500
			8	2.10					
			10	1.91					
XLAMTD30A	22	30	7	3.52	2100X750X1950	650	G1	75	600
			8	3.36					
			10	3.06					

*The exhaust volume is measured under the rated exhaust pressure, according to the national standard GB3853 test (equivalent to ISO1217 appendix C).

*The above data is based on the standard grid- 380V / 50HZ.

* Please make further inquiry for the non-standard specification type and machines which are used under high/low temperature, high humidity, dusty working environment.

ALL IN ONE SOLUTION

Full performance screw type air compressor type integrates screw air compressor, refrigeration compressor dryer and compressed air high efficiency filter into a whole, after the built-in freezer dryer and efficient filter are processed, the whole performance unit discharges dry and clean compressed air, that can fully guarantee the quality of terminal gas of user, and save the cost of production through improve the productivity.

HIGH QUALITY COMPONENTS



Reliable refrigerant compressor



Oversized durable heat exchanger

TECHNICAL SPECIFICATION

ALL IN ONE PERMANENT MAGNET VARIABLE SPEED SERIES

MODEL	POWER kw HP	PRESSURE Bar	CAPACITY m ³ /min	DIMENSIONS mm	WEIGHT Kg	OUTLET PIPE DIAMETER	NOISE LEVEL dB	TANK VOLUME L	
WITH AIR TANK									
XLPMT7.5A	5.5	7.5	7	0.65	1230X600X1530	300	G3/4	65	
			8	0.60					
			10	0.55					
XLPMT10A	7.5	10	7	1.05	1230X600X1530	300	G3/4	65	
			8	0.99					
			10	0.90					
XLPMT15A	11	15	7	1.68	1550X820X1780	350	G3/4	65	
			8	1.59					
			10	1.45					
XLPMT20A	15	20	7	2.20	1550X820X1780	350	G3/4	65	
			8	2.10					
			10	1.91					
WITH AIR TANK AND DRYER									
XLPMTD7.5A	5.5	7.5	7	0.65	1725X660X1625	380	G3/4	65	200/500
			8	0.60					
			10	0.55					
XLPMTD10A	7.5	10	7	1.05	1725X660X1625	380	G3/4	65	200/500
			8	0.99					
			10	0.90					
XLPMTD15A	11	15	7	1.68	1880X820X1940	505	G3/4	65	500
			8	1.59					
			10	1.45					
XLPMTD20A	15	20	7	2.20	1880X820X1940	505	G3/4	65	500
			8	2.10					
			10	1.91					
XLPMTD30A	22	30	7	3.52	2100X750X1950	650	G1	75	600
			8	3.36					
			10	3.06					

*The exhaust volume is measured under the rated exhaust pressure, according to the national standard GB3853 test (equivalent to ISO1217 appendix C).

*Recommend frequency 30%~100%

*The above data is based on the standard grid- 380V / 50HZ.

*Please make further inquiry for the non-standard specification type and machines which are used under high/low temperature, high humidity, dusty working environment.

*15bar is special for laser cutting machine.

PERMANENT MAGNET FREQUENCY SERIES

SOFT START DESIGN

The frequency conversion start-up mode greatly reduces the impact to the power grid and the mechanical part when machine starts, therefore, it will not cause damage to the electrical equipment. The acceleration and deceleration control is smooth, as well as the driving voltage and current characteristic curve. Resonance processing design, brake buffer design, custom password permission Design catches better customer experience.

SYNCHRONIZATION DESIGN

When the screw machine is in stable operation, there is a constant relationship between the rotor speed and the grid frequency. If the frequency of the grid is constant, the speed of the synchronous machine is constant at the steady state, which has nothing to do with the size of the load.

**HIGH EFFICIENCY
IE4 MOTOR**

NO DEMAGNETIZATION

TAPERED CONNECTION

**HIGH HEAT RESISTANCE
UP TO 180°C**

LOW NOISE

ANY OTHER COLORS TO CHOOSE FROM:



TECHNICAL SPECIFICATION

MODEL	POWER kw	HP	PRESSURE Bar	CAPACITY m ³ /min	DIMENSIONS mm	WEIGHT Kg	OUTLET PIPE DIAMETER	NOISE LEVEL dB
XLPM7.5A	5.5	7.5	7	0.65	840 X 670 X 925	200	G3/4	65
			8	0.60				
			10	0.55				
			13	0.45				
XLPM10A	7.5	10	7	1.05	840 X 670 X 925	200	G3/4	65
			8	0.99				
			10	0.90				
XLPM15A	11	15	7	1.68	1000 X 820 X 1145	300	G3/4	65
			8	1.59				
			10	1.45				
XLPM20A	15	20	7	2.20	1000 X 820 X 1145	300	G3/4	65
			8	2.10				
			10	1.91				
			13	1.74				
			15	1.40				

TECHNICAL SPECIFICATION

MODEL	POWER kw	HP	PRESSURE Bar	CAPACITY m ³ /min	DIMENSIONS mm	WEIGHT Kg	OUTLET PIPE DIAMETER	NOISE LEVEL dB
XLPM25A	18.5	25	7	2.80	1100 X 880 X 1190	390	G1 1/4	75
			8	2.66				
			10	2.41				
			13	2.20				
XLPM30A	22	30	7	3.52	1100 X 880 X 1190	390	G1 1/4	75
			8	3.36				
			10	3.06				
			13	2.80				
XLPM40A	30	40	7	4.95	1200 X 950 X 1358	530	G1 1/4	75
			8	4.72				
			10	4.30				
XLPM50A	37	50	7	6.51	1300 X 1000 X 1366	590	G1 1/2	75
			8	6.19				
			10	5.62				
			13	5.10				
XLPM60A	45	60	7	7.71	1300 X 1000 X 1366	590	G1 1/2	80
			8	7.35				
			10	6.67				
XLPM75A	55	75	7	10.14	1600 X 1300 X 1600	1210	G2	80
			8	9.66				
			10	8.77				
			13	7.95				
XLPM100A	75	100	7	12.78	1600 X 1300 X 1600	1210	G2	80
			8	12.18				
			10	11.07				
XLPM120A	90	120	7	14.91	1600 X 1300 X 1600	1220	G2	85
			8	14.17				
			10	12.88				
XLPM150A	110	150	7	18.96	2090 X 1550 X 2000	2300	DN65	85
			8	18.06				
			10	16.42				
XLPM175A	132	175	7	23.37	2090 X 1550 X 2000	2300	DN65	85
			8	22.26				
			10	20.03				
			13	17.80				

•The exhaust volume is measured under the rated exhaust pressure, according to the national standard GB3853 test (equivalent to ISO1217 appendix C).
 •Recommend frequency 30%~100%.
 •The above data is based on the standard grid- 380V / 50HZ.
 •Please make further inquiry for the non-standard specification type and machines which are used under high/low temperature, high humidity, dusty working environment.

TWO STAGE COMPRESSION PERMANENT MAGNET VARIABLE SPEED NORMAL PRESSURE SERIES

- ☐ SMOOTH SPEED ADJUSTMENT
- ☐ EXCEEDS FIRST CLASS ENERGY EFFICIENCY STANDARDS
- ☐ LOW NOISE
- ☐ HIGH DISCHARGE CAPACITY
- ☐ DUAL INVERTER CONTROL



ANY OTHER COLORS TO CHOOSE FROM:

TECHNICAL SPECIFICATION

MODEL	POWER		PRESSURE	CAPACITY	DIMENSIONS	WEIGHT	OUTLET PIPE	NOISE LEVEL
	kw	HP	Bar	m ³ /min	mm	Kg	DIAMETER	dB
XLPM30A-IID	22	30	7	4.20	1300 X 950 X 1340	590	G1 1/4	75
			8	4.00				
			10	3.60				
XLPM40A-IID	30	40	7	5.75	1350 X 1000 X 1350	670	G1 1/2	75
			8	5.48				
			10	4.90				
XLPM50A-IID	37	50	7	7.50	1350 X 1000 X 1350	670	G1 1/2	75
			8	7.10				
			10	6.45				
XLPM60A-IID	45	60	7	9.26	1760 X 1300 X 1750	1360	G2	78
			8	8.80				
			10	7.92				
XLPM75A-IID	55	75	7	11.46	1760 X 1300 X 1750	1360	G2	80
			8	10.92				
			10	9.82				

TECHNICAL SPECIFICATION

MODEL	POWER		PRESSURE	CAPACITY	DIMENSIONS	WEIGHT	OUTLET PIPE	NOISE LEVEL
	kw	HP	Bar	m ³ /min	mm	Kg	DIAMETER	dB
XLPM100A-IID	75	100	7	15.60	2670 X 1880 X 1820	2600	DN65	80
			8	14.92				
			10	13.23				
XLPM120A-IID	90	120	7	18.75	2670 X 1880 X 1820	2600	DN65	85
			8	17.85				
			10	16.45				
XLPM150A-IID	110	150	7	23.76	2740 X 2145 X 2000	3550	DN65	85
			8	22.57				
			10	20.58				
XLPM175A-IID	132	175	7	27.55	2740 X 2145 X 2000	3550	DN65	85
			8	26.25				
			10	23.85				
XLPM200A-IID	160	200	7	33.28	3980 X 2380 X 2260	5300	DN100	85
			8	32.23				
			10	28.56				
XLPM250A-IID	185	250	7	40.32	3980 X 2380 X 2260	6000	DN100	85
			8	37.38				
			10	33.28				
XLPM270A-IID	200	270	7	43.55	3980 X 2380 X 2260	6000	DN100	85
			8	41.85				
			10	37.46				
XLPM300A-IID	220	300	7	47.38	3980 X 2380 X 2260	6000	DN100	85
			8	45.50				
			10	41.26				
XLPM350A-IID	250	350	7	52.20	3980 X 2380 X 2260	6000	DN100	85
			8	50.85				
			10	44.90				
XLPM420A-IID	315	420	7	63.80	3980 X 2380 X 2500	6200	DN125	90
			8	61.50				
			10	56.00				

- The exhaust volume is measured under the rated exhaust pressure, according to the national standard GB3853 test (equivalent to ISO1217 appendix C).
- Recommend frequency 30%~100%.
- The above data is based on the standard grid- 380V / 50HZ.
- Please make further inquiry for the non-standard specification type and machines which are used under high/low temperature, high humidity, dusty working environment.

TWO STAGE COMPRESSION PERMANENT MAGNET VARIABLE SPEED LOW PRESSURE SERIES

- ☐ SMOOTH SPEED ADJUSTMENT
- ☐ EXCEEDS FIRST CLASS ENERGY EFFICIENCY STANDARDS
- ☐ LOW NOISE
- ☐ HIGH DISCHARGE CAPACITY
- ☐ DUAL INVERTER CONTROL



ANY OTHER COLORS TO CHOOSE FROM:

TECHNICAL SPECIFICATION

MODEL	POWER		PRESSURE	CAPACITY	DIMENSIONS (LxWxH)mm	WEIGHT	OUTLET PIPE DIAMETER	NOISE LEVEL
	kW	HP						
XLPM50A-IID	37	50	4	9.39	1650 X 1300 X 1850	1360	G2	75
			5	8.79				
XLPM60A-IID	45	60	4	11.32	1650 X 1300 X 1850	1360	G2	80
			5	10.61				
XLPM75A-IID	55	75	4	14.95	2670 X 1880 X 2000	2800	DN65	80
			5	13.91				
XLPM100A-IID	75	100	4	19.01	2670 X 1880 X 2000	2800	DN65	80
			5	18.60				
XLPM120A-IID	90	120	4	23.92	3335 X 2145 X 2055	3600	DN100	80
			5	22.78				
XLPM150A-IID	110	150	4	28.33	3335 X 2145 X 2055	3600	DN100	80
			5	26.98				
XLPM175A-IID	132	175	4	33.10	3335 X 2145 X 2055	3600	DN100	82
			5	31.14				

MODEL	POWER		PRESSURE	CAPACITY	DIMENSIONS (LxWxH)mm	WEIGHT	OUTLET PIPE DIAMETER	NOISE LEVEL
	kW	HP						
XLPM200A-IID	160	200	4	44.67	3978 X 2378 X 2450	6200	DN125	82
			5	41.70				
XLPM250A-IID	185	250	4	47.39	3978 X 2378 X 2450	6200	DN125	85
			5	45.00				
XLPM270A-IID	200	270	4	50.83	3978 X 2378 X 2450	6200	DN125	85
			5	46.20				
XLPM300A-IID	220	300	4	54.00	3978 X 2378 X 2450	6200	DN125	85
			5	51.45				

- The exhaust volume is measured under the rated exhaust pressure, according to the national standard GB3853 test (equivalent to ISO1217 appendix C).
- Recommend frequency 30%~100%.
- The above data is based on the standard grid- 380V / 50HZ.
- Please make further inquiry for the non-standard specification type and machines which are used under high/low temperature,high humidity,dusty working environment.

PERMANENT MAGNET VARIABLE SPEED LOW PRESSURE SCREW AIR COMPRESSOR SERIES

TECHNICAL SPECIFICATION

MODEL	POWER		PRESSURE	CAPACITY	DIMENSIONS (LxWxH)mm	WEIGHT	OUTLET PIPE DIAMETER	NOISE LEVEL
	kW	HP						
XLPM60AL	45	60	2	15.00	2560 X 1710 X 1950	2500	DN80	80
			3	13.00				
XLPM75AL	55	75	2	18.50	2560 X 1710 X 1950	2500	DN80	80
			3	17.50				
XLPM100AL	75	100	2	25.50	2860 X 1800 X 2080	2800	DN100	80
			3	22.00				
XLPM120AL	90	120	2	30.00	2860 X 1800 X 2080	2800	DN100	85
			3	27.00				
XLPM150AL	110	150	2	38.50	3515 X 2230 X 2450	3300	DN150	85
			3	31.50				
XLPM175AL	132	175	2	43.50	3515 X 2230 X 2450	3500	DN150	85
			3	37.50				
XLPM200AL	160	200	2	50.50	3515 X 2230 X 2450	3600	DN150	85
			3	45.50				

- The exhaust volume is measured under the rated exhaust pressure, according to the national standard GB3853 test (equivalent to ISO1217 appendix C).
- Recommend frequency 30%~100%.
- The above data is based on the standard grid- 380V / 50HZ.
- Please make further inquiry for the non-standard specification type and machines which are used under high/low temperature,high humidity,dusty working environment.

INNOVATIVE TWO STAGE COMPRESSION PERMANENT MAGNET VARIABLE SPEED TECHNOLOGY

THE INDUSTRY PIONEER

Xinlei is the pioneer in developing the two stage compression permanent magnet variable speed air compressor. This new innovation is able to save up to more than 50% energy. A complete range of air compressor from 7.5 - 315 kW is available to meet the market demand benefiting the industry in energy savings

HIGH EFFICIENCY AIR END ASSEMBLY

SYNCHRONOUS MOTOR SMOOTH SPEED ADJUSTMENT

Xinlei is the only one in the world who incorporates electronic speed control in two stage compression, achieving smooth speed adjustment for both first and second stage compression simultaneously.



TWIN PERMANENT MAGNET SYNCHRONOUS MOTOR DIRECTLY CONNECTED TO DOUBLE AIR END WITH A SINGLE SHAFT RESPECTIVELY

Xinlei is the world pioneer in incorporating permanent magnet synchronous motor in two stage compression screw air compressor, both first and second stage air end utilizing single shaft connection design, achieving zero loss in transmission.



HIGH PRECISION DESIGN

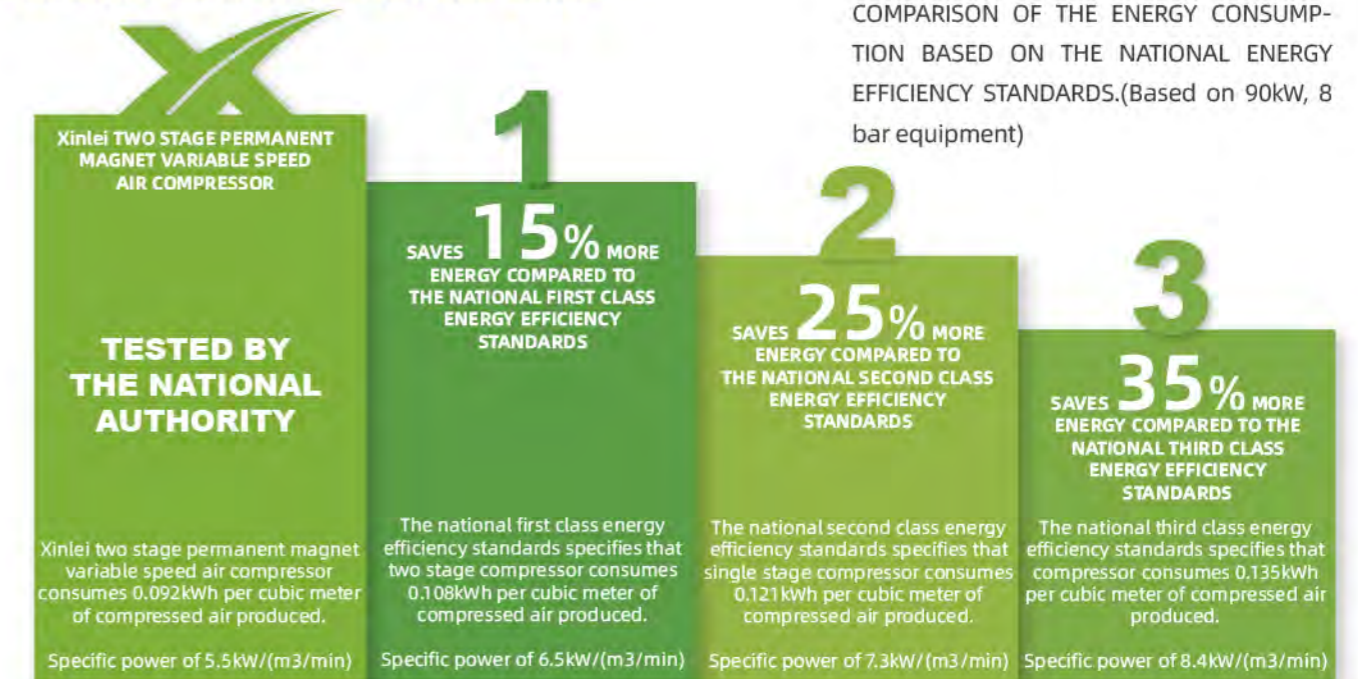
Every screw air end element is precisely design and tested to ensure the highest quality and efficiency. Asymmetric rotor type profile increases the efficiency by 3 - 5%. Lower compression ratio for each of the air end assembly extends the life of the bearings and air end.



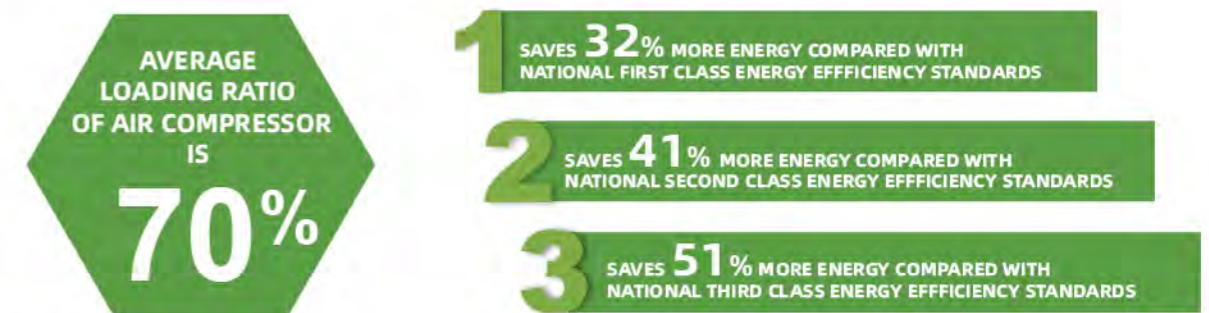
ENVIRONMENTALLY FRIENDLY

High energy saving air compressor technology developed by Xinlei independently, exceeds the national first class energy efficiency standards, leading the world in the field of saving the environment.

ENERGY SAVINGS ON FULL LOAD



According to the test results issued by the national authority, Xinlei air compressor is able to save more than 15% of energy compared to the national first class energy efficiency standards, more than 25% of energy compared to the national second class energy efficiency standards, more than 35% of energy compared to the national third class energy efficiency standards.



Xinlei air compressor can automatically realize frequency conversion work. energy can be saved by approximately 32% compared with ordinary level 1 efficiency under the condition that average compressed air load ratio is 70%.energy can be saved by approximately 41% compared with ordinary level 2 efficiency, and energy can be saved by approximately 51% compared with ordinary level 3 efficiency.

SILENT

The rotation speed of the first stage and second stage compression is lower than 2200rpm which translate to lower noise level.

FIXED SPEED AM SERIES

HIGH COOLING EFFICIENCY

TRUE DIRECT DRIVE

LOW ENERGY LOSS

USER FRIENDLY DESIGN

Silent and low vibration, user friendly design, optimized structure, low maintenance cost.

PRODUCT HIGHLIGHTS

The motor's aluminum enclosure has high thermal conductivity which leads to good heat dissipation from the motor, low operating temperature, and long lifetime.

Water, moisture, and dust resistant design ensures usability even in harsh environment.

High precision processing guarantees the concentricity of the stator and rotor, uniform and consistent air gap, and stable operation. Simple yet good looking, practically designed for easy dismantling and reassembling.

ANY OTHER COLORS TO CHOOSE FROM:



①

SHAPE SELECTION



②

③



④

⑤

TECHNICAL SPECIFICATION

MODEL	POWER kW	HP	PRESSURE Bar	CAPACITY m ³ /min	DIMENSIONS mm	WEIGHT Kg	OUTLET PIPE DIAMETER	NOISE LEVEL dB
XLAM7.5A	5.5	7.5	7	0.65	840X670X925	210	G3/4	65
			8	0.60				
			10	0.55				
XLAM10A	7.5	10	7	1.05	840X670X925	210	G3/4	65
			8	0.99				
			10	0.90				
XLAM15A	11	15	7	1.68	1000X820X1145	330	G3/4	65
			8	1.59				
			10	1.44				

TECHNICAL SPECIFICATION

MODEL	POWER kW	HP	PRESSUR E Bar	CAPACITY m ³ /min	DIMENSIONS mm	WEIGHT Kg	OUTLET PIPE DIAMETER	NOISE LEVEL dB
XLAM20A	15	20	7	2.20	1000 X 820 X 1145	330	G3/4	65
			8	2.10				
			10	1.91				
XLAM25A	18.5	25	7	2.80	1100 X 880 X 1190	440	G1 1/4	75
			8	2.66				
			10	2.41				
XLAM30A	22	30	7	3.52	1100 X 880 X 1190	440	G1 1/4	75
			8	3.36				
			10	3.06				
XLAM40A	30	40	7	4.95	1200 X 950 X 1358	620	G1 1/4	75
			8	4.72				
			10	4.30				
XLAM50A	37	50	7	6.51	1300 X 1000 X 1366	650	G1 1/2	75
			8	6.19				
			10	5.62				
XLAM60A	45	60	7	7.71	1300 X 1000 X 1366	670	G1 1/2	80
			8	7.35				
			10	6.67				
XLAM75A	55	75	7	10.14	1600 X 1300 X 1600	1220	G2	80
			8	9.66				
			10	8.77				
XLAM100A	75	100	7	12.78	1600 X 1300 X 1600	1220	G2	80
			8	12.18				
			10	11.07				
XLAM150A	110	150	7	18.96	2090 X 1550 X 2000	2300	DN65	85
			8	18.06				
			10	16.42				
XLAM175A	132	175	7	23.37	2090 X 1550 X 2000	2300	DN65	85
			8	22.26				
			10	20.23				

•The exhaust volume is measured under the rated exhaust pressure, according to the national standard GB3853 test (equivalent to ISO1217 appendix C).
 • Recommend frequency 30%~100%.
 •The above data is based on the standard grid- 380V / 50HZ.
 • Please make further inquiry for the non-standard specification type and machines which are used under high/low temperature, high humidity, dusty working environment.

ENVIRONMENTAL PROTECTION REFRIGERATED AIR DRYER



- ☐ ENERGY SAVING
- ☐ HIGH EFFICIENCY
- ☐ INTELLIGENT
- ☐ ENVIROMENTAL PROTECTION
- ☐ STABLE

Ambient temperature: 38°C, Max.42°C.
 Intel temperature: 38°C, Max.65°C.
 Working pressure: 0.7MPa,Max.1.6MPa
 pressure dew point: 2°C~10°C(Air dew point:-23°C~17°C)
 Installation environment: no sun,no rain,good ventilation,device level hard ground,no dust and fluff

ANY OTHER COLORS TO CHOOSE FROM: ■ ■ ■ ■ ■ ■ ■ ■

TECHNICAL SPECIFICATION

Xinlei refrigerated air dryer	Model	XLAD-7.5HP XLAD-10HP	XLAD-15HP XLAD-20HP	XLAD-25HP XLAD-30HP	XLAD-40HP XLAD-50HP	XLAD-60HP	XLAD-75HP	XLAD-100HP
Max. air volume	m ³ /min	1.2	2.4	3.6	6.5	8.5	10.5	13
Power supply		220V/50HZ for single phase						
Input power	KW	0.37	0.52	0.735	1.26	1.87	2.43	2.63
Air pipe connection		RC3/4"		RC1"	RC1-1/2"	RC2"		
Evaporator type		Aluminum alloy plate						
Cooling method		Air cooling, Fin-tube						
Refrigerant model		R134a			R410a			
Intelligent control and protection		LED dew point display, LED alarm code display, operation status indication						
Intelligent anti-freezing protection		Constant pressure expansion valve						
Temperature control		Automatic control of condensing temperature/dew point temperature						
High voltage protection		Temperature sensor	Temperature sensor&Inductive intelligent protection					
Low voltage protection		Temperature sensor&Inductive intelligent protection						
Entrance temperature		≤65°C						
Exit temperature		≈ Entrance temperature - 5 ~ 10°C						
Dew point temperature		2-10°C						
Weight	Kg	36	45	56	63	73	85	94
Dimension	L	480	520	640	700	770	770	800
	W	380	410	520	540	590	590	610
	H	665	725	850	950	990	990	1030

ENVIRONMENTAL PROTECTION REFRIGERATED AIR DRYER



- ☐ ENERGY SAVING
- ☐ HIGH EFFICIENCY
- ☐ INTELLIGENT
- ☐ ENVIROMENTAL PROTECTION
- ☐ STABLE

Ambient temperature: 38°C, Max.42°C.
 Intel temperature: 38°C, Max.65°C.
 Working pressure: 0.7MPa,Max.1.6MPa
 pressure dew point: 2°C~10°C(Air dew point:-23°C~17°C)
 Installation environment: no sun,no rain,good ventilation,device level hard ground,no dust and fluff

ANY OTHER COLORS TO CHOOSE FROM: ■ ■ ■ ■ ■ ■ ■ ■

TECHNICAL SPECIFICATION

Xinlei refrigerated air dryer	Model	XLAD-150HP	XLAD-175HP	XLAD-200HP	XLAD-250HP	XLAD-350HP	XLAD-420HP
Max. air volume	m ³ /min	17	23	27	33	42	55
Power supply		380V/50HZ for three phase					
Input power	KW	3.7	4.9	5.8	6.1	8	9.2
Air pipe connection		DN50	DN65	DN80		DN100	
Evaporator type		Aluminum alloy plate					
Cooling method		Air cooling, Fin-tube					
Refrigerant model		R407C					
Intelligent control and protection		LED dew point display, LED alarm code display, LED compression current display, operation status indication					
Intelligent anti-freezing protection		Constant pressure expansion valve & compressor automatic start/stop					
Temperature control		Automatic control of condensing temperature/dew point temperature					
High voltage protection		Temperature sensor&Inductive intelligent protection					
Low voltage protection		Temperature sensor&Inductive intelligent protection					
Remote connection		Configure remote connection dry contact, RS485 expansion interface (Please let us know in advance if you need)					
Weight	Kg	180	210	350	420	550	680
Dimension	L	1100	1200	1200	1450	1450	1600
	W	850	900	950	1000	1100	1200
	H	1143	1203	1273	1523	1683	1700

XSXD HEATLESS ADSORPTION DRYER

- The heatless regenerative adsorption dryer is a dehumidification and purification device that uses the heatless regeneration method (no external heat source) to adsorb and dry compressed air based on the principle of pressure swing adsorption.
- The heatless regenerative adsorption dryer (hereinafter referred to as the heatless adsorption dryer) is a high-quality product carefully designed and developed by the company on the basis of digesting and absorbing the advanced technology of similar foreign products in recent years and considering the actual situation of domestic users. Under normal operating conditions, the dew point of the air (under pressure) can be reduced to below -40°C , and the lowest can reach -70°C . It can provide oil-free, water-free and high-quality compressed air for a few applications that have high requirements on air quality, especially for the cold northern regions and other gas-consuming occasions where the ambient temperature is below 0°C .
- The heatless desiccant dryer adopts a double-tower structure, one tower absorbs moisture in the air under a certain pressure, and the other tower uses a small part of dry air slightly higher than atmospheric pressure to regenerate the desiccant in the adsorption tower. Tower switching ensures continuous supply of dry compressed air.
- The unique computer control system visually displays the operating status of the dryer, and has multiple alarms, protection functions and DCS remote control interface to ensure safe use. The actuators all adopt pneumatic angle seat valves and pneumatic butterfly valves, and the pneumatic control system adopts
- The deep dry air source is filtered to ensure reliable operation and avoid valve leakage.
- The height and diameter of the adsorption tower have been precisely calculated and tested to ensure that the flow rate is accurately grasped. And important parameters such as heat and mass transfer, to avoid excessive wear and tunneling of the adsorbent.
- Professional program-controlled design, small airflow pulse and air pressure fluctuation, effectively reducing outlet gas dust and regenerative airflow noise.
- Convenient and practical cycle time mode and energy-saving economic mode, adjustable regeneration gas volume and time program, adapt to various actual use conditions and outlet dew point requirements.
- The supporting base has a stable and beautiful appearance, and is easy to install, use and maintain.

RATED WORKING CONDITION OF XSXD HEATLESS ADSORPTION DRYER:

- Compressed air inlet temperature: $2\sim 45^{\circ}\text{C}$
- Compressed air pressure: 0.7MPa, up to 1.0MPa (higher pressure can be customized)
- Pressure dew point: -20°C (-40°C dew point can be customized)
- Intake oil content: 0.08ppm ($0.1\text{mg}/\text{m}^3$)
- Dust particle size of finished gas: $60\mu\text{m}$
- Average recombination gas flow: 10%~22% of rated gas flow
- Adsorbent: activated alumina (molecular sieves are available for higher requirements)
- Pressure drop: 0.025MPa (under 0.7MPa inlet pressure)
- Regeneration method: normal temperature regeneration
- Working mode: automatic switching between two towers in 4min or 10min, continuous work
- Control mode: cycle 4~10min adjustable
- Installation method: indoor, allowing installation without foundation



TECHNICAL SPECIFICATION

SXD heatless adsorption dryer	Model	XSXD01	XSXD02	XSXD03	XSXD06	XSXD08	XSXD10	XSXD12	XSXD15	XSXD20
Max. air volume	m^3/min	1.2	2.4	3.8	6.5	8.5	11.5	13.5	17	23
Power supply		220V/50Hz								
Input power	KW	0.2								
Air pipe connection		RC1"			RC1-1/2"	RC2"			DN65	DN80
Total Weight	KG	105	135	187	238	282	466	520	670	798
Dimension	L*W*H	670*360*1305	670*400*1765	850*400*1385	1000*600*1700	1100*600*2050	1200*600*2030	1240*600*2280	1300*720*2480	1400*720*2520

SXD heatless adsorption dryer	Model	XSXD25	XSXD30	XSXD40	XSXD50	XSXD60	XSXD80	XSXD100	XSXD120	XSXD150	XSXD200†	
Max. air volume	m^3/min	27	34	45	55	65	85	110	130	155	Information available on request	
Power supply		220V/50Hz										
Input power	KW											
Air pipe connection		DN100			DN125		DN150		DN200			
Total Weight	KG	980	1287	1624	1624	2650	3520	4320	4750	5260		
Dimension	L*W*H	1500*800*2450	1700*770*2420	1950*860*2600	2010*860*2670	2160*1040*2705	2420*1100*2860	2500*1650*2800	2650*1650*2800	2800*1700*2900		

XSRD MICRO HEAT ADSORPTION DRYER

- Micro-heat regeneration adsorption dryer is a dehumidification and purification device that uses micro-heat regeneration method to adsorb and dry compressed air according to the principle of pressure swing adsorption.
- Micro-heat regeneration adsorption dryer (hereinafter referred to as micro-heat adsorption dryer), has the advantages of both heating regeneration and heatless regeneration, adopts a slight heating method for the regeneration gas, thereby reducing the regeneration gas consumption, and because the regeneration is more thorough, it can prolong The tower body switching cycle is increased. Under normal operating conditions, the dew point of the air (under pressure) can be reduced to below -40°C, and the lowest can reach -70°C. It can provide oil-free, water-free and high-quality compressed air for a few applications that have high requirements on air quality, especially for the cold northern regions and other gas-consuming occasions where the ambient temperature is below 0°C.
- Micro-heat desiccant dryer adopts double-tower structure, one tower absorbs moisture in the air under a certain pressure, and the other tower uses a small part of dry air slightly higher than atmospheric pressure to regenerate the desiccant in the adsorption tower. Tower switching ensures continuous supply of dry compressed air.
- On the basis of having all the advantages of the heatless regenerative adsorption dryer, the high-quality stainless steel finned U-shaped heating tube is used, which has uniform heating and high heat transfer coefficient, which can ensure long-term trouble-free operation.

RATED WORKING CONDITIONS OF XSRD MICRO HEAT ADSORPTION DRYER:

Compressed air inlet temperature: 2~45°C
 Compressed air pressure: 0.7MPa, up to 1.0MPa (higher pressure can be customized)
 Pressure dew point: -20°C (-40~-70 dew point can be customized)
 Intake oil content: 0.08ppm (0.1mg/m³)
 Dust particle size of finished gas: 60µm
 Average recombination gas flow: 5%~8% of rated gas volume
 Adsorbent: activated alumina (molecular sieves are available for higher requirements)
 Pressure drop: 0.025MPa (under 0.7MPa inlet pressure)
 Regeneration method: micro heat regeneration
 Working mode: automatic switching between two towers for 30 minutes or 60 minutes, continuous work
 Control mode: 30~60min adjustable
 Installation method: indoor, allowing installation without foundation



TECHNICAL SPECIFICATION

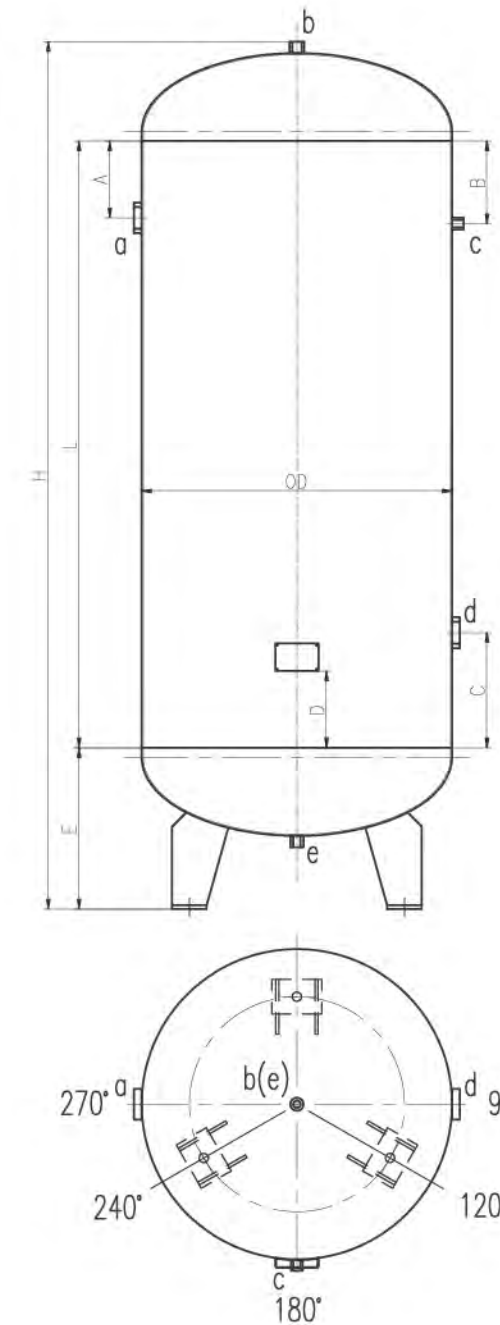
SRD micro heat adsorption dryer	Model	XSRD01	XSRD02	XSRD03	XSRD06	XSRD08	XSRD10	XSRD12	XSRD15	XSRD20
Max. air volume	m ³ /min	1.2	2.4	3.8	6.5	8.5	11.5	13.5	17	23
Power supply		220V/50Hz					380V/50HZ			
Input power	KW	1.2	1.2	1.2	2.2	2.2	3.2	3.2	4.7	6.2
Air pipe connection		RC1*			RC1-1/2*		RC2*		DN65	DN80
Total Weight	KG	135	170	240	285	255	526	605	712	848
Dimension	L*W*H	670*450*1305	670*530*1765	850*510*1450	1000*700*1700	1100*760*2050	1150*850*2173	1240*780*2283	1200*860*2480	1400*880*2510

SRD micro heat adsorption dryer	Model	XSRD25	XSRD30	XSRD40	XSRD50	XSRD60	XSRD80	XSRD100	XSRD120	XSRD150	XSRD200†	
Max. air volume	m ³ /min	27	34	45	55	65	85	110	130	155	Information available on request	
Power supply		380V/50HZ										
Input power	KW	7.7	9.2	12.2	15.2	18	24	30	36	45		
Air pipe connection		DN80		DN100		DN125		DN150		DN200		
Total Weight	KG	1150	1328	1674	2100	2707	3573	4639	5100	5586		
Dimension	L*W*H	1500*940*2450	1700*985*2410	1960*1130*2600	2010*1130*2670	2160*1470*2705	2420*1400*2860	2500*1650*2800	2650*1650*2800	2800*1800*2900		

AIR TANK

TECHNICAL SPECIFICATION

PRODUCT NAME			AIR TANK SIZE				DATA			
FIGURE NUMBER	SPECIFICATIONS		TANK	TANK	BARREL BODY	WEIGHT	INLET AND OUTLET		SAFETY VALVE	DRAIN VALVE
	VOLUME /	WORKING PRESSURE	INTERNAL DIAMETER Ø (MM)	HEIGHT (MM)	HEIGHT (MM)	KG	DN	RP	INTERFACE	INTERFACE
JAC-300(550)/0.8L-00	0.3	8	Φ550	1553	1050	82		RP1"	R1/2"	R1/2"
JBC-300(550)/1.0L-00	0.3	10	Φ550	1553	1050	90.7		RP1"	R1/2"	R1/2"
JAC-600(650)/0.8L-00	0.6	8	Φ650	2093	1500	144		RP1-1/2"	R3/4"	R1/2"
JBC-600(650)/1.0L-00	0.6	10	Φ650	2093	1500	149		RP1-1/2"	R3/4"	R1/2"
JAC-1000(800)/0.8L-00	1	8	Φ800	2180	1500	208		RP1-1/2"	R3/4"	R1/2"
JBC-1000(800)/1.0L-00	1	10	Φ800	2180	1500	246		RP1-1/2"	R3/4"	R1/2"
JYR2013-1.5/0.8-00	1.5	8	Φ1000	2310	1500	364		RP1-1/2"	Rp1"	R3/4"
JYR2013-1.5/1.0-00	1.5	10	Φ1000	2310	1500	477		RP1-1/2"	Rp1"	R3/4"
JYR2013-2.0/0.8-00A	2	8	Φ1000	2810	2000	432	80	Flange	R1"	R3/4"
JYR2013-2.0/1.0-00	2	10	Φ1000	2810	2000	577	125	Flange	R1"	R3/4"
JYR2013-3.0/0.8-00	3	8	Φ1200	2950	2000	649	80	Flange	R1-1/2"	R1"
JYR201*-3.0/1.0-00	3	10	Φ1200	2950	2000	786	80	Flange	R1-1/2"	R1"
JYR2013-4.0/0.8-00	4	8	Φ1400	3050	2000	994	125	Flange	R2-1/2"	R1"
JYR14-4.0/1.0-00	4	10	Φ1400	3050	2000	1173	100	Flange	R1-1/2"	R1"
JYR2013-5.0/0.8-00A	5	8	Φ1400	3810	2700	1116	150	Flange	R2-1/2"	R1"
JYR2014-5.0/1.0-00	5	10	Φ1400	3810	2700	1450	150	Flange	R2-1/2"	R1"



ANY OTHER COLORS TO CHOOSE FROM:

SOY PRECISION FILTER

Through interception, inertia, diffusion, gravity and other functions, the precision filter can remove water, dust, oil mist and other impurities contained in the compressed air effectively, so as to make the compressed air clean and dry and improve the quality of air.



C-Grade

Main pipeline filter, mostly used for air compressor, connecting after the rear cooler or before the refrigerated dryer, can filter a large number of liquid and solid particles over 3um, reach the minimum residual oil content of only 5ppm.

A-Grade

Ultra-efficient dust removal filter, mostly used in the upstream of adsorption dryer or the downstream of refrigerated dryer, can filter out liquid and solid particles as small as 0.01um, reach the lowest residual oil content of 0.01 PPM. Remember to install T grade air pipeline filter in the upstream to protect it.

T-Grade

It is mainly used for tools, machinery, motor, cylinder and other equipment, connecting before A-grade filter or after adsorption dryer, to filter liquid and solid particles as small as 1um and reach the minimum residual oil content of 0.5 ppm.

H-Grade

Activated carbon oil mist filter, mostly used to purify food, drugs, breathing gas, can filter oil mist and hydrocarbons as small as 0.01um, reach the lowest residual oil content of only 0.003 PPM. Remember to install A grade super-efficient oil removal filter in the upstream to protect it.

TECHNICAL SPECIFICATION

MODEL	DISPLACEMENT (Nm ³ /min)	OUTLET DIAMETER	W	H
SOY-001	1.2	RC1"	105	285
SOY-002	2.4	RC1"	105	285
SOY-004	4.5	RC1-1/2"	125	350
SOY-007	8	RC1-1/2"	125	480
SOY-010	12	RC2"	140	610
SOY-015	17	RC2-1/2"	150	900
SOY-020	23	DN80	320	1060
SOY-025	27	DN80	320	1180
SOY-030	33	DN80	430	1150
SOY-040	45	DN80	430	1090

Max Working Pressure: ≤1.0MPa

Operating Fluid Temperature: C, T, A 66°C, H 50°C

Initial Pressure Drop: 0.01MPa

Max Permitted Pressure Drop: 0.07MPa

Service Life: C, T, A 8000h, H 1000h

Connecting Methods: Taper pins with thread for 0.5~12 series. Flange for the series above 13.

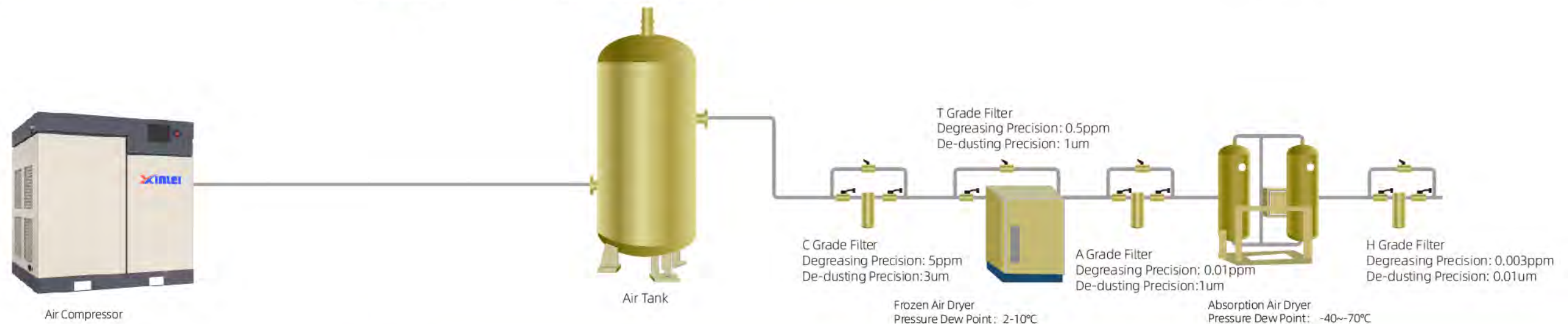
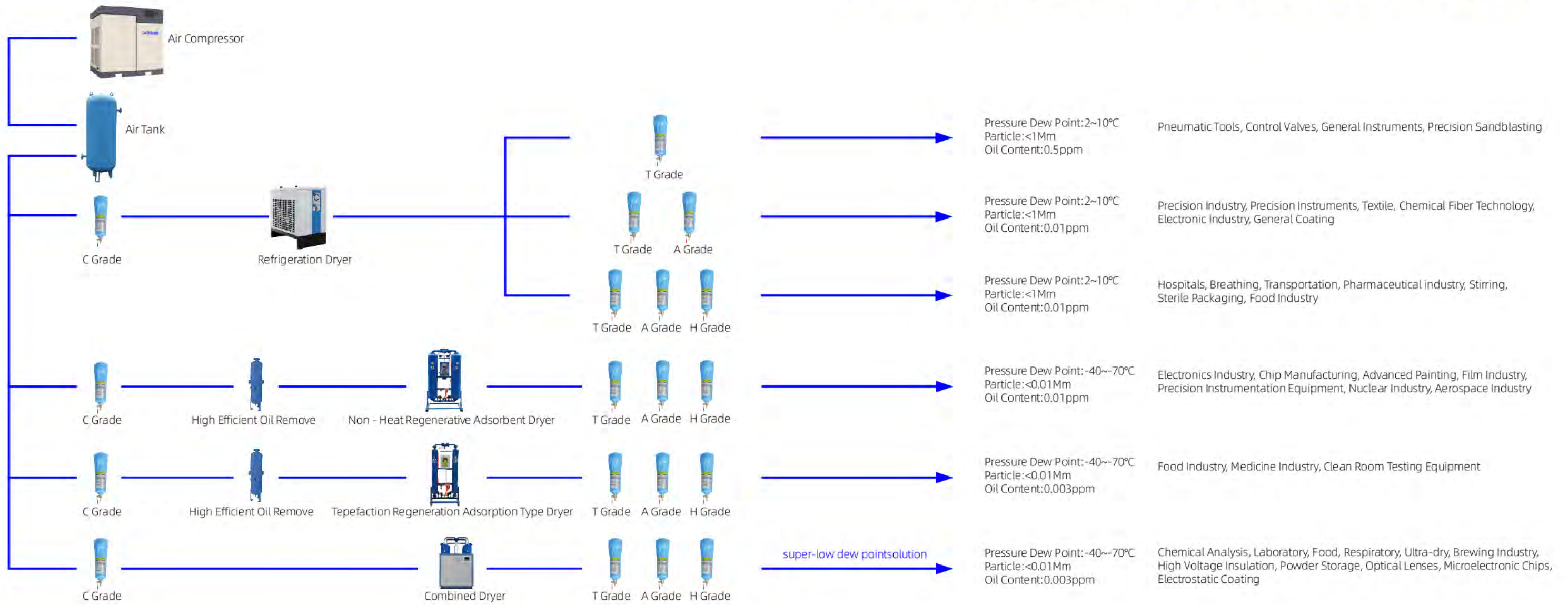
FILTRATION ACCURACY LEVEL



GRADE	C	T	A	H
FUNCTION	PRE-FILTRATION	PRECISION FILTRATION	ULTRA PRECISION FILTRATION	ODOR REMOVAL ACTIVATED CARBON
PARTICLE DIAMETER	≤ 3μm	≤ 1μm	≤ 0.01μm	≤ 0.01μm
RESIDUAL OIL CONTENT	≤ 5ppm	≤ 0.5ppm	≤ 0.01ppm	≤ 0.003ppm

COMPRESSED AIR SYSTEM CONFIGURATION DIAGRAM

THROUGH PROFESSIONAL CUSTOMIZATION OF SELECTION AND INSTALLATION, XINLEI WILL BRING YOU A BETTER ECONOMIC BENEFITS.



INTELLIGENT IOT MANAGEMENT PLATFORM

XINLEI IOT CLOUD PLATFORM SOLUTION (OPTIONAL)

STABLE / SAFE / OPEN

Utilizing the 128-bit dynamic data encryption mode, the device is connected to the cloud platform via the gateway module and artificial intelligence interface. The gateway module provides PS485 or Ethernet interface and incorporates a variety of protocols, which is able to connect and monitor multiple devices remotely. The cloud platform is available for both android and IOS users. It is also an open source platform that allows connectivity with ERP or any other third party software.

CORE EQUIPMENT

- The compressor
- Cloud server
- Human-computer interaction screen
- WIFI base station
- All kinds of smart meters
- The gateway module



MOBILE APP REAL TIME CONTROL

Xinlei has developed a real time control mobile app according to client's needs. The mobile app has successfully achieved the remote monitoring control, energy saving settings management, display of fault alarm, review of fault history, and cross-platform interconnection for the air compressor.



GLOBAL CUSTOMER SERVICE SYSTEM

WECHAT INTERACTIVE SERVICE PLATFORM

Xinlei has developed an interactive service platform via Wechat to enhance the interaction between Xinlei and clients worldwide. Customer service is available at our client's fingertips by a few touches on the mobile app.

CLOUD MONITORING SYSTEM

Xinlei establishes the cloud monitoring system, which can not only enable customers to achieve remote control of equipment, but also can monitor the machine to understand the performance and running dynamics of the machine well.

COMPETENT AFTER SALES SERVICE TEAM

Providing superior after sales service is the core value of Xinlei. Xinlei's experienced technical engineers will provide you with the quickest and most reliable service allowing you to have a peace of mind on the after sales service of Xinlei air compressors.

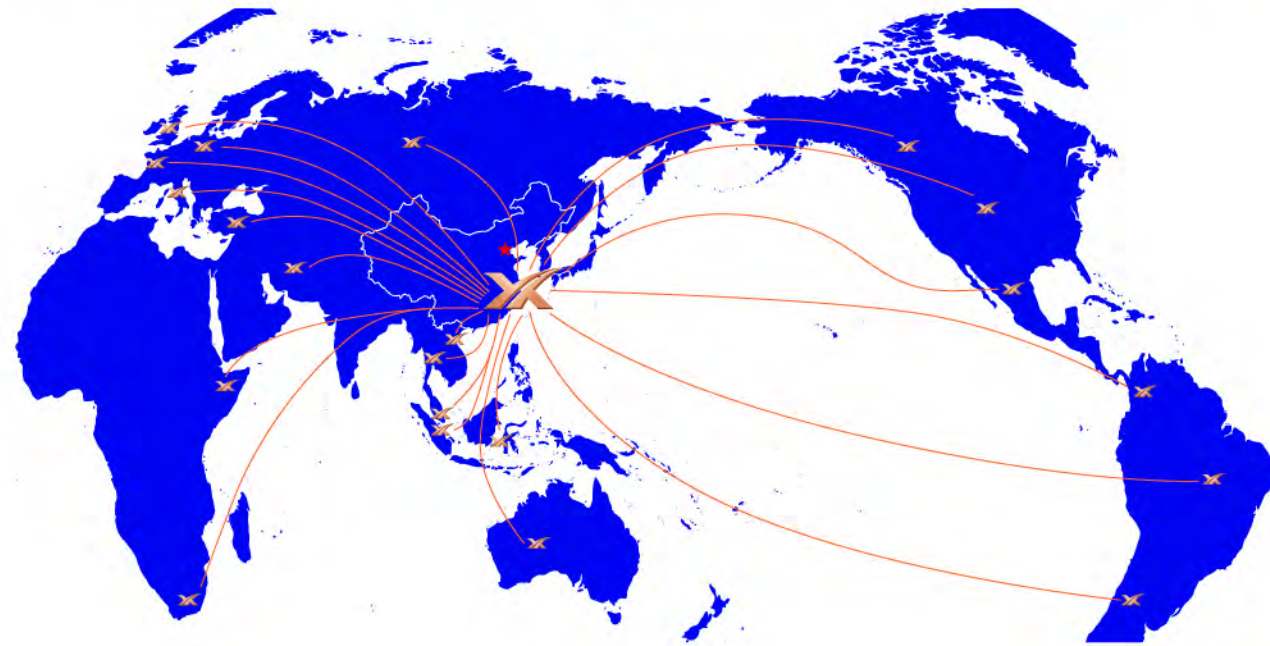
XINLEI OFFERS WARM RECEPTION TO FOREIGN CUSTOMERS FROM VARIOUS COUNTRIES



XINLEI CREATES INTERNATIONAL BRAND

SATISFIED CUSTOMERS FROM ALL AROUND THE WORLD

EXPORTED TO MORE THAN 110 COUNTRIES AND REGIONS



- | | | | | | |
|--------------|-------------|----------|------------|-----------|-----------|
| Argentina | Brazil | Bahrain | Bangladesh | Canada | Ecuador |
| Egypt | France | Greece | Hungary | India | Indonesia |
| Iran | Italy | Korea | Malaysia | Mexico | Morocco |
| Myanmar | Netherlands | Nigeria | Pakistan | Palestine | Panama |
| Peru | Philippines | Poland | Russia | Singapore | Slovenia |
| South Africa | Spain | Thailand | Turkey | The UAE | U.K |
| Ukraine | U.S.A | Vietnam | | | |

GLOBAL FOOTPRINT



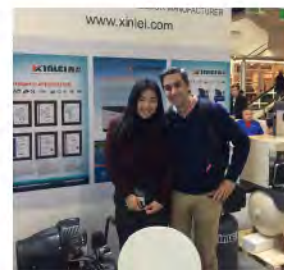
XINLEI IN GERMANY



XINLEI IN ARGENTINA



XINLEI IN AUSTRALIA



XINLEI IN U.S.A

MINING INDUSTRY



MANUFACTURING INDUSTRY



TEXTILE INDUSTRY



CONSTRUCTION INDUSTRY

